



# MONTHLY MEMBERSHIP PROGRESS REPORT

Results as of: 7/31/2015

Multiple District 18

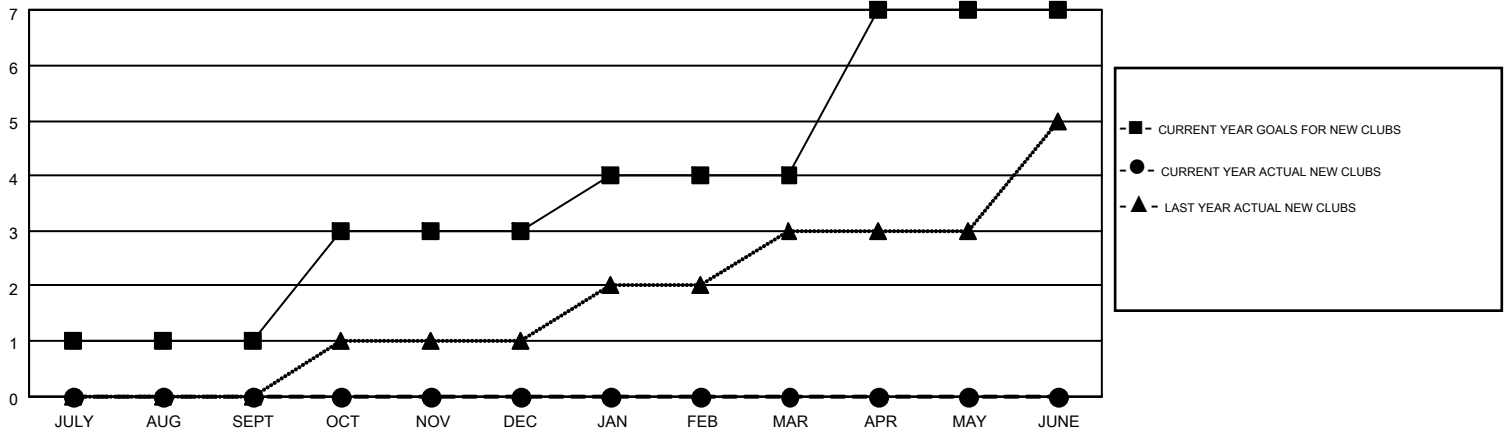
LOCATION: GEORGIA

GMT: HARVEY WHITLEY

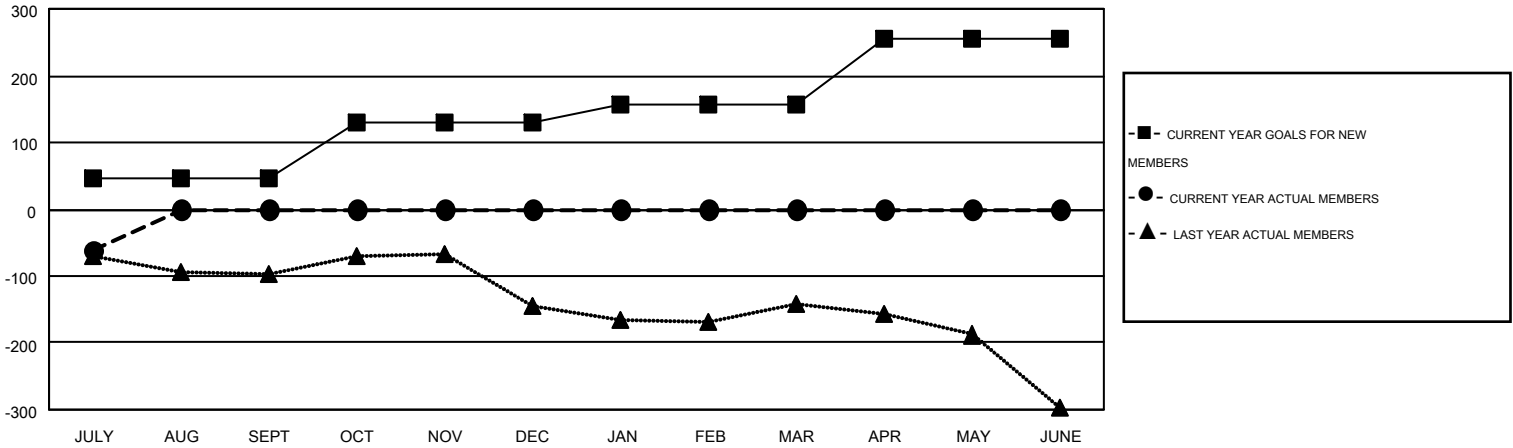
GMT CA 1

Clubs					Members				
RESULTS FOR 2015-2016					RESULTS FOR 2015-2016				
QUARTER	NEW CLUB GOAL	NEW CLUBS	DROPPED CLUBS	NET GAIN/LOSS	QUARTER	NEW MEMBER GOAL	CHARTER AND NEW MEMBERS ADDED	DROPPED MEMBERS	NET GAIN/LOSS
JULY/AUG/SEPT	1	0	0	0	JULY/AUG/SEPT	47	41	102	-61
OCT/NOV/DEC	2	0	0	0	OCT/NOV/DEC	84	0	0	0
JAN/FEB/MAR	1	0	0	0	JAN/FEB/MAR	26	0	0	0
APR/MAY/JUNE	3	0	0	0	APR/MAY/JUNE	99	0	0	0

GOALS AND ACTUAL NEW CLUBS CUMULATIVE



GOALS AND ACTUAL MEMBERS CUMULATIVE



DROPPED CLUBS: 0	20 CLUBS OF 230 ADDED 1 OR MORE NEW MEMBERS	<u>GENDER DISTRIBUTION</u>	
		MALE	3,770 (68.68%)
<u>DROPPED MEMBERS</u>		FEMALE	1,719 (31.32%)
DECEASED	10	<a href="#">CLICK HERE FOR HEALTH ASSESSMENT DATA</a>	
CLUB CANCELLED	0		
OTHER	92		
TOTAL	102	FAMILY UNIT MEMBERS	1,040
		HEAD OF HOUSEHOLD	507
		NON-HEAD OF HOUSEHOLD	533